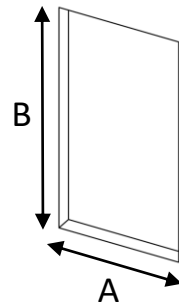


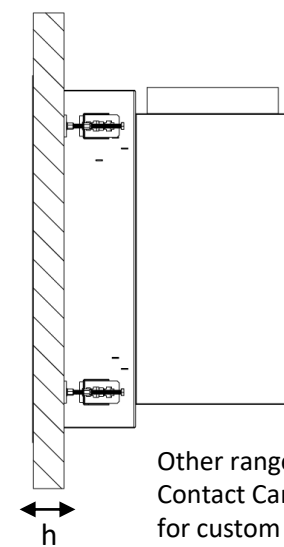


Housing Installation

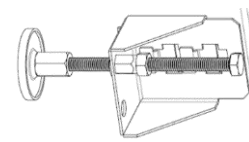


	Filter Size	A	B
Square	3P3	374	362
	6P6	679	667
Rect.	3P6	374	667
	9P6	679	972

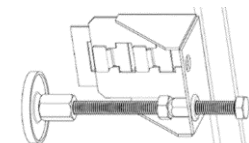
Std. Compression



h < 50 mm



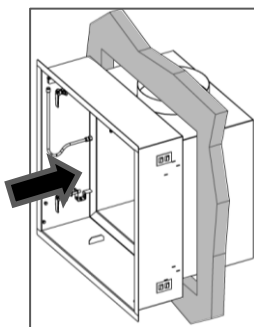
h > 50 ... 105 mm



M8

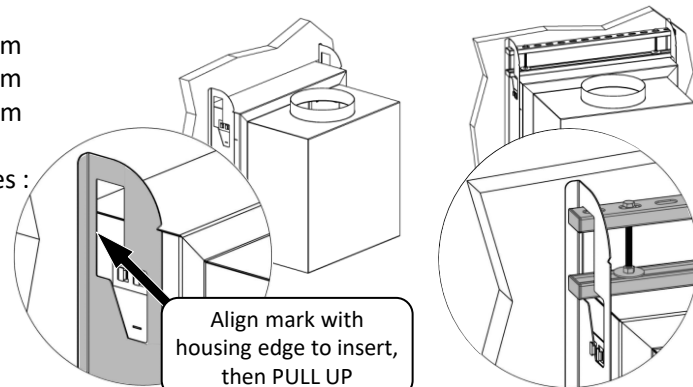
Other ranges :
Contact Camfil
for custom options

Optional Quick Clamping kit – locking plates available for wall thicknesses h:



h₁: 18-38 mm
h₂: 34-54 mm
h₃: 50-70 mm

Other ranges :
Contact
Camfil
for
custom
options



Align mark with
housing edge to insert,
then PULL UP

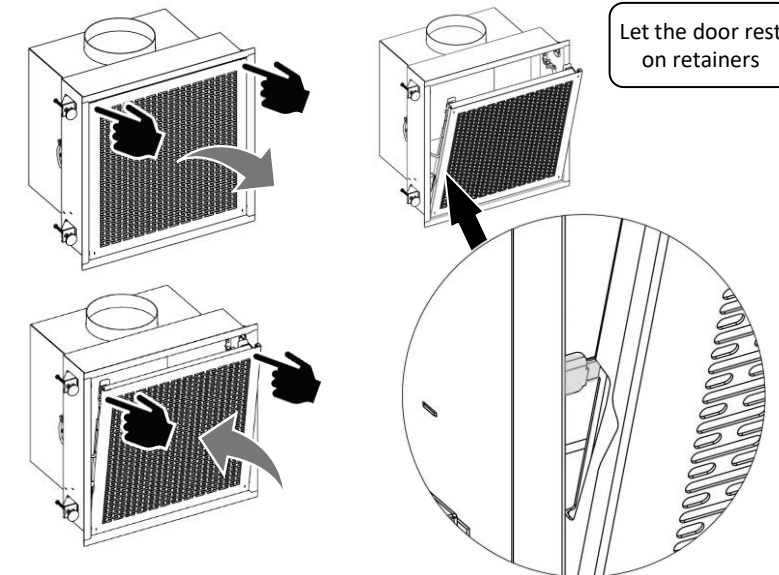
1 Insert housing
into wall opening

2 Pre-position
locking plates

3 Insert preset clamping
bars and lock with screws

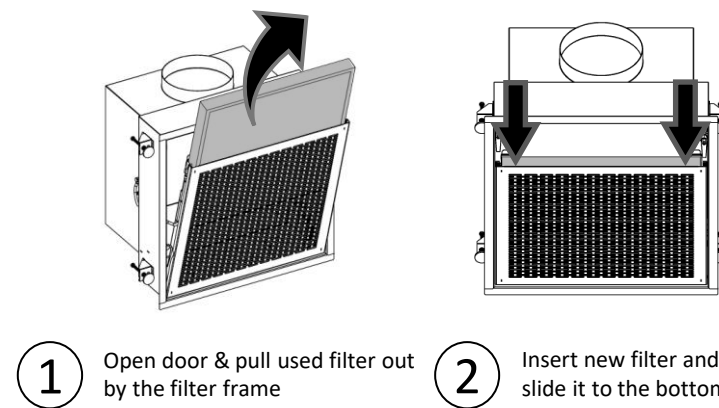
Door Locking & Unlocking

Simultaneously push door top corners to open / close



Let the door rest
on retainers

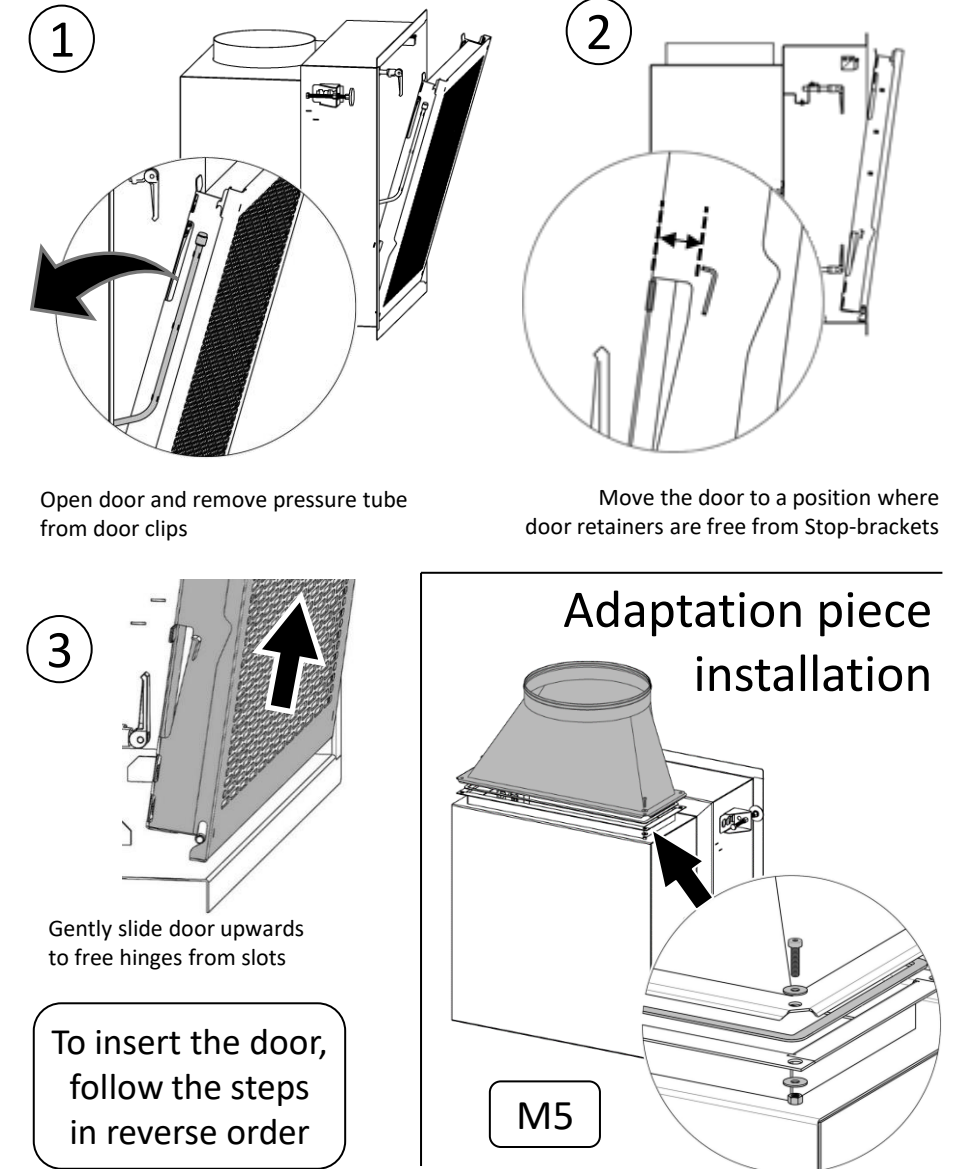
Prefilter Exchange



1 Open door & pull used filter out
by the filter frame

2 Insert new filter and
slide it to the bottom

Door Removal / Insertion



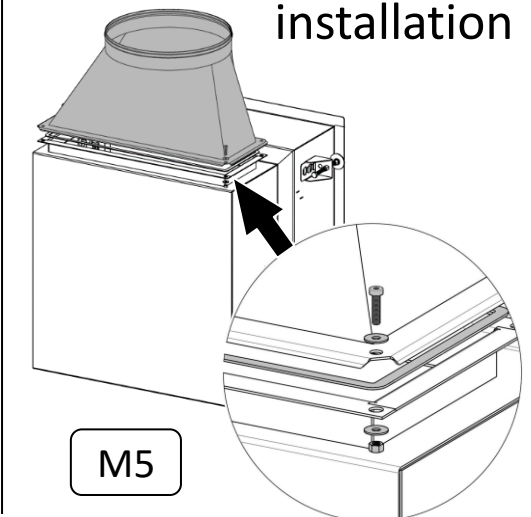
1 Open door and remove pressure tube
from door clips

2 Move the door to a position where
door retainers are free from Stop-brackets

3 Gently slide door upwards
to free hinges from slots

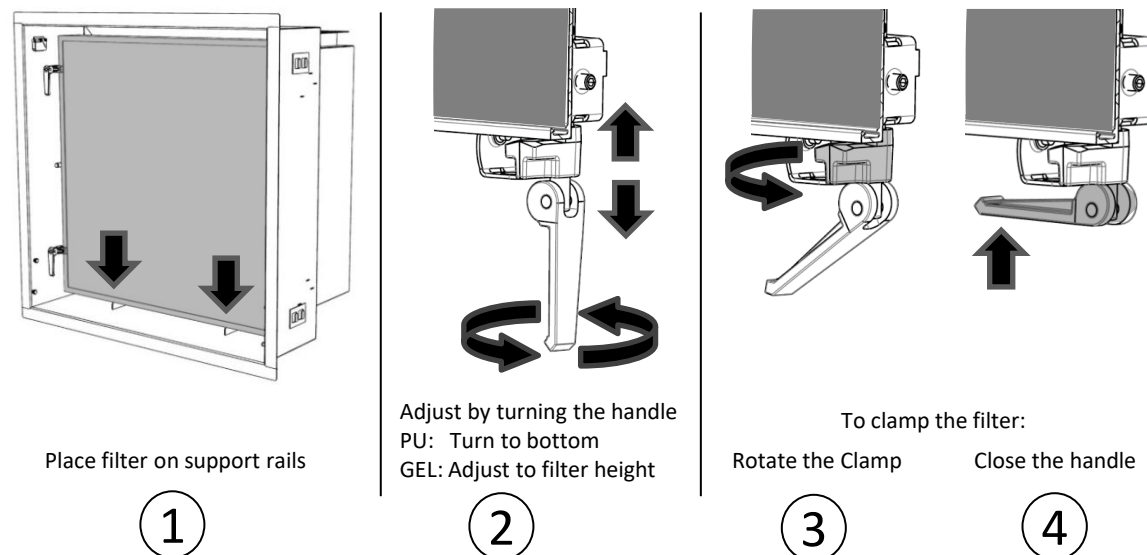
To insert the door,
follow the steps
in reverse order

Adaptation piece installation



M5

Main Filter Installation



Place filter on support rails

Adjust by turning the handle
PU: Turn to bottom
GEL: Adjust to filter height

To clamp the filter:
Rotate the Clamp
Close the handle

1

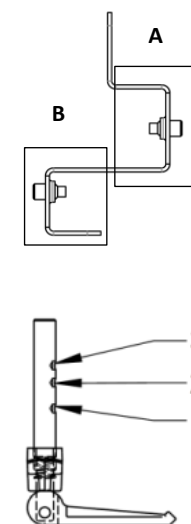
2

3

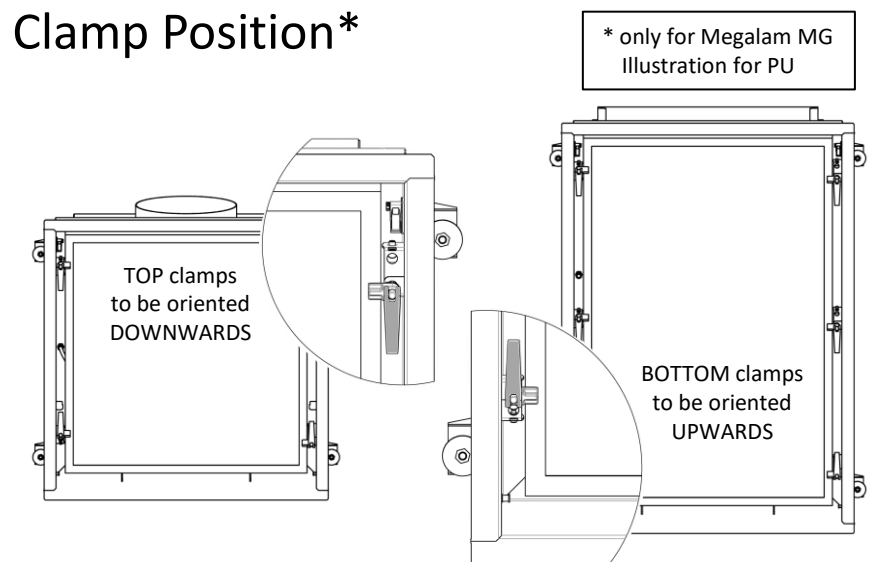
4

Clamp Settings

Filter height	Clamp Config. PU
MD	A-1
78	A-2
MX	B-1
MG	B-3



Clamp Position*



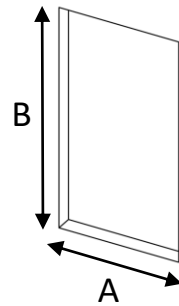
* only for Megalam MG
Illustration for PU

TOP clamps
to be oriented
DOWNWARDS

BOTTOM clamps
to be oriented
UPWARDS

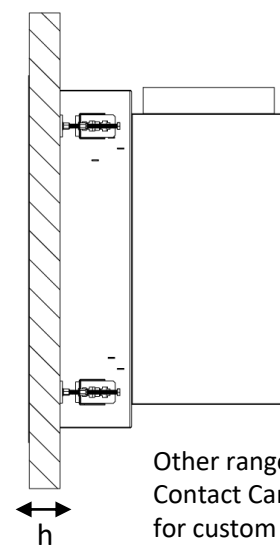


Housing Installation

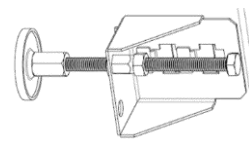


	Filter Size	A	B
Square	3P3	374	362
	6P6	679	667
Rect.	3P6	374	667
	9P6	679	972

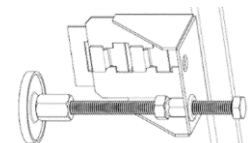
Std. Compression



h < 50 mm



h > 50 ... 105 mm

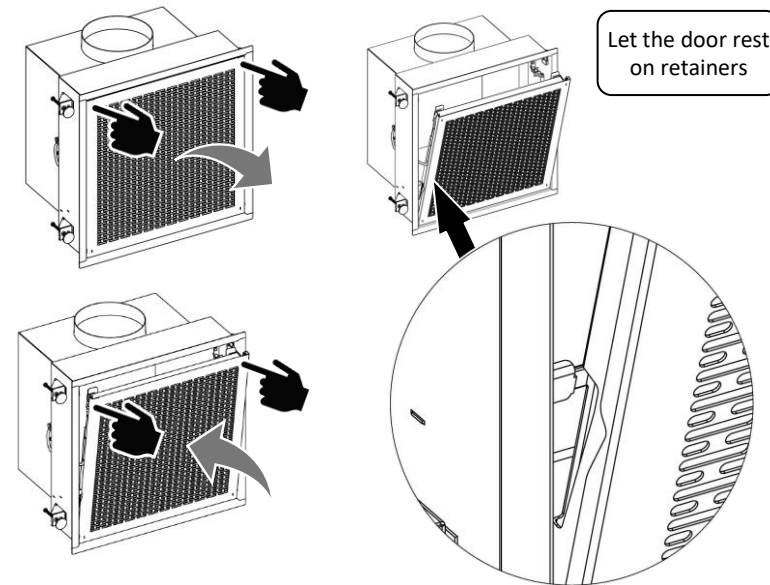


M8

Other ranges :
Contact Camfil
for custom options

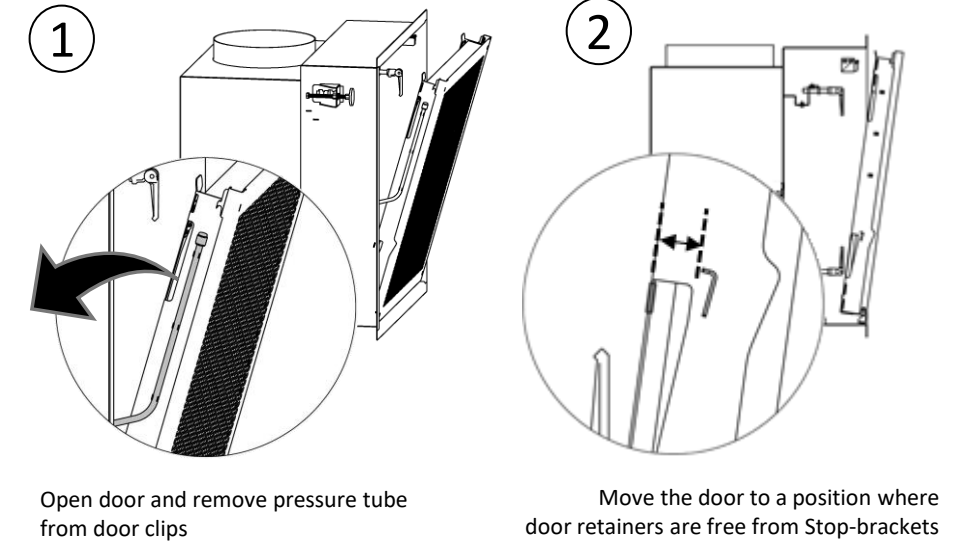
Door Locking & Unlocking

Simultaneously push door top corners to open / close



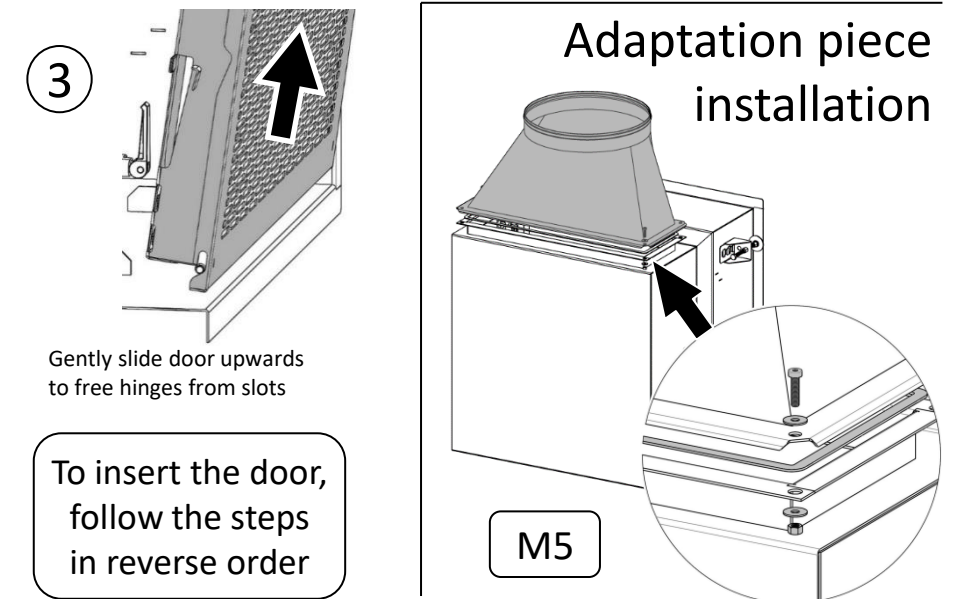
Let the door rest on retainers

Door Removal / Insertion



Open door and remove pressure tube from door clips

Move the door to a position where door retainers are free from Stop-brackets

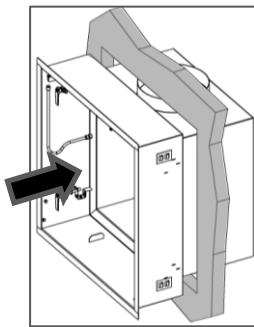


Gently slide door upwards to free hinges from slots

To insert the door, follow the steps in reverse order

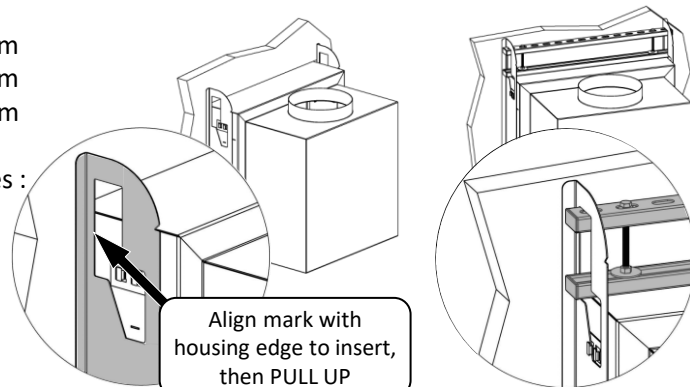
M5

Optional Quick Clamping kit – locking plates available for wall thicknesses h:



h₁: 18-38 mm
h₂: 34-54 mm
h₃: 50-70 mm

Other ranges :
Contact Camfil
for custom options



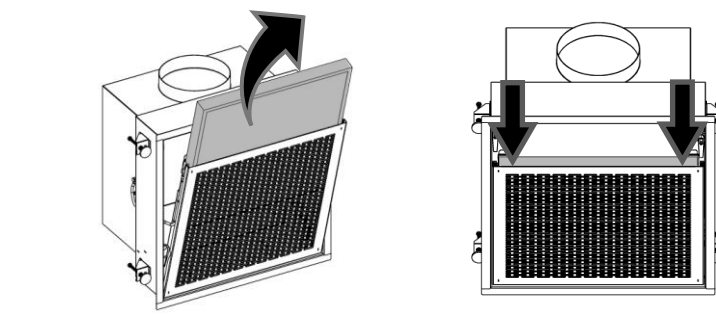
Align mark with housing edge to insert, then PULL UP

1 Insert housing into wall opening

2 Pre-position locking plates

3

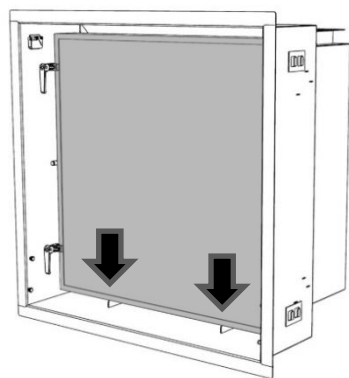
Prefilter Exchange



1 Open door & pull used filter out by the filter frame

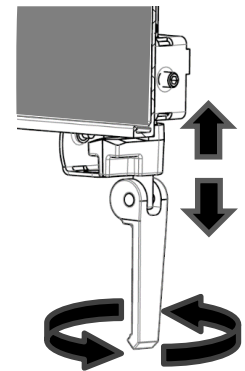
2 Insert new filter and slide it to the bottom

Main Filter Installation



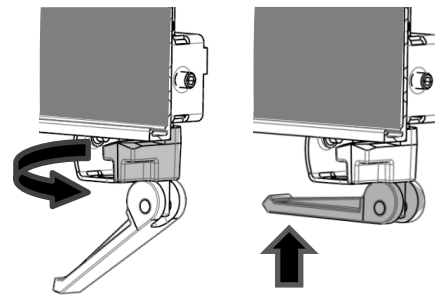
Place filter on support rails

1



Adjust by turning the handle
PU: Turn to bottom
GEL: Adjust to filter height

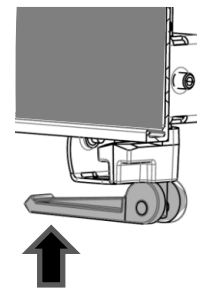
2



Rotate the Clamp

3

Insert preset clamping bars and lock with screws

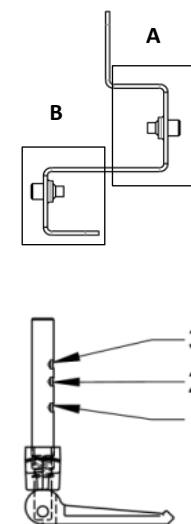


To clamp the filter:
Close the handle

4

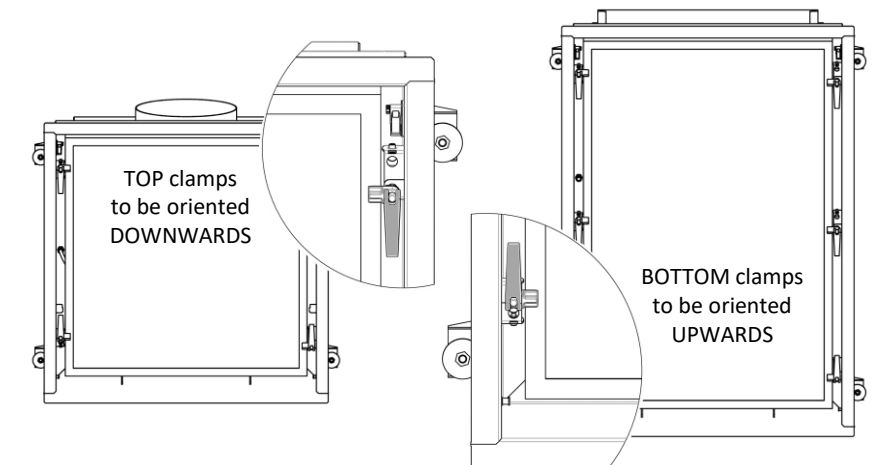
Clamp Settings

Filter height	Clamp Config. PU
MD	A-1
78	A-2
MX	B-1
MG	B-3



Clamp Position*

* only for Megalam MG
Illustration for PU



TOP clamps to be oriented DOWNWARDS

BOTTOM clamps to be oriented UPWARDS